



3 Chelsea Close, Hampton, London TW12 1RS

Energy Efficiency Rating		
	Current	Potential
Very energy efficient - lower running costs		
(92 plus) A		
(81-91) B		
(69-80) C		
(55-68) D		
(39-54) E		
(21-38) F		
(1-20) G		
Not energy efficient - higher running costs		
England & Wales	EU Directive 2002/91/EC	

Environmental Impact (CO ₂) Rating		
	Current	Potential
Very environmentally friendly - lower CO ₂ emissions		
(92 plus) A		
(81-91) B		
(69-80) C		
(55-68) D		
(39-54) E		
(21-38) F		
(1-20) G		
Not environmentally friendly - higher CO ₂ emissions		
England & Wales	EU Directive 2002/91/EC	



Chelsea Close , Hampton Hill £250,000 Leasehold

- Ground floor
- Fully double glazed
- One bedroom
- Close to High Street and Bushy Park

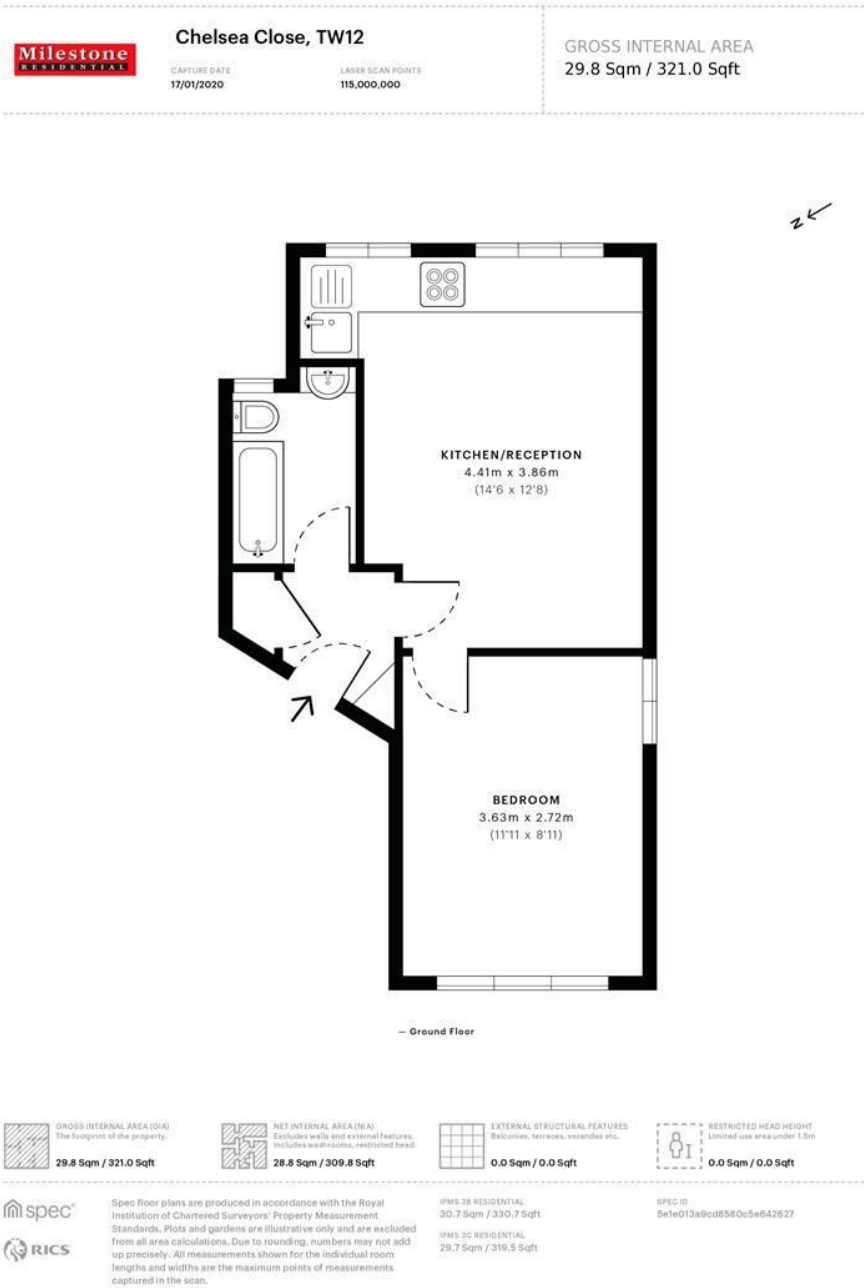
LOCATION

Chelsea Close is set moments from Hampton Hill High Street with its local amenities and bus-routes, via Cricket Lane Royal bushy park is also moments away. Fulwell Railway Station is in with walking distance and by car the A316 and in turn, motorway network are a short drive.



3 Chelsea Close, Hampton, London TW12 1RS

A well proportioned ground floor flat, set in a quiet cul-de-sac close to Hampton Hill high Street and Royal Bushy park. With a recently installed boiler and neutrally decorated throughout, this would be an ideal investment, and can be sold with a tenant in situe, or first time purchase. The property comprises, wide entrance hall with storage cupboard, reception room with kitchen units and utilities to one end , leading to a good sized double bedroom with dual aspect, a family bathroom with three piece suit and shower over bath completes the accommodation. The flat has a long lease and will be sold with either a tenant-in-situ or with no-chain.



It is our aim to provide particulars that are both accurate and reliable but they are not guaranteed and would not form part of any offer or contract. Please contact us if you require clarification and we would be happy to assist. Please also note that the appliances and heating system have not been tested and therefore, no warranties can be given as to their condition.